

Aesthetics

The modern yet versatile design of our bin enclosures and waste box covers fits seamlessly into any space. Choose from our selection of designer boxes and stylish enclosures to make your outdoor area and garden both functional and elegant.

Precision

Perfectly maintained dimensions and precise component fitting make our bin enclosures and covers easy to install and seamlessly integrate into any space. We pay attention to every detail to ensure each installation is not only aesthetically pleasing but also durable.

Reliability

A sturdy load-bearing frame made of thick, galvanized, and powder-coated sheet metal ensures that our durable bin enclosures will last for many years while maintaining their strength and appearance. Our steel waste bins and metal containers combine quality with style.

Our luxurious bin enclosures combine aesthetics with functionality, creating a harmonious space around your home. With our modern waste bin boxes and enclosures, your surroundings will remain tidy and elegant, pleasing the eye every day.

■■■ MODU GUARD

■■■ MODU GUARD

Elegance and Order
in Your Garden

Got questions?
Get in touch!



Everyday practicality
and exceptional design

We guarantee durability, aesthetics, and high-quality enclosures for waste bins. We look forward to hearing from you!



07487838340



hello@moduguard.co.uk



www.moduguard.co.uk

If you want to enhance the quality of your home and garden space, our stylish structures are the perfect solution.

www.moduguard.co.uk

Four Steps to a Perfect Space

Here are four key steps to consider when planning the right bin enclosure for your garden or home:

1 Space Analysis

Evaluate the available space and determine the best location for your bin enclosure. Our waste bin covers are easily accessible, discreet, and perfect for any setting.

2 Choosing a Style

Decide on the style of your bin enclosure—whether it's a modern design, a designer box, or a more classic solution like metal enclosures.

3 Customization to Your Needs

Determine the size and type of bin enclosures based on the number and types of waste containers, as well as whether you need solutions such as metal bins or steel dumpsters.

4 Implementation

Order your chosen bin enclosure and ensure proper installation. A well-executed setup with durable enclosures will guarantee long-lasting functionality and resilience for years to come.

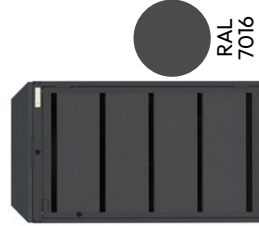


Enclosures for 120 L bins

Available in colors



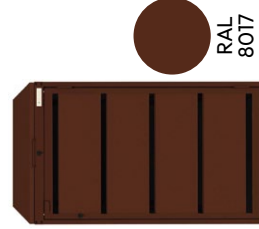
golden oak



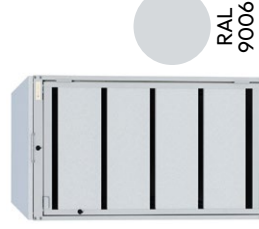
RAL 7016



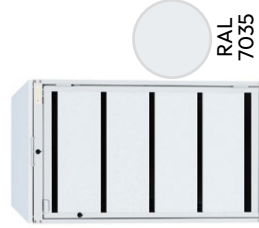
RAL 9005



RAL 8017



RAL 9006



RAL 7035

Available in sizes



x1

height: 114 cm
width: 59 cm
depth: 68 cm



x2

height: 114 cm
width: 118 cm
depth: 68 cm



x3

height: 114 cm
width: 177 cm
depth: 68 cm



x4

height: 114 cm
width: 236 cm
depth: 68 cm



x5

height: 114 cm
width: 295 cm
depth: 68 cm

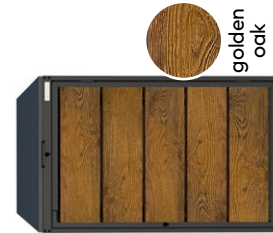


x6

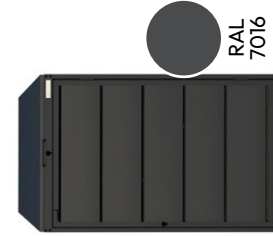
height: 114 cm
width: 354 cm
depth: 68 cm

Enclosures for 240 L bins

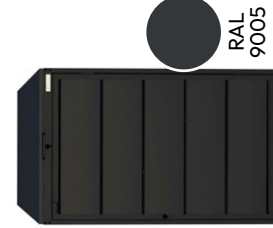
Available in colors



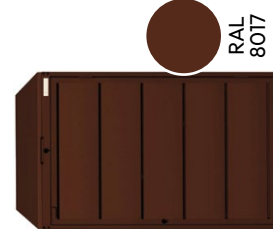
golden oak



RAL 7016



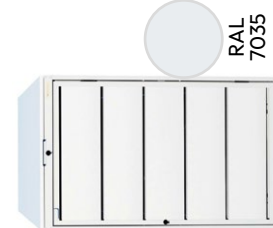
RAL 9005



RAL 8017



RAL 9006



RAL 7035

Available in sizes



x1

height: 126.5 cm
width: 69.5 cm
depth: 83 cm



x2

height: 126.5 cm
width: 139 cm
depth: 83 cm



x3

height: 126.5 cm
width: 208.5 cm
depth: 83 cm



x4

height: 126.5 cm
width: 278 cm
depth: 83 cm



x5

height: 126.5 cm
width: 347 cm
depth: 83 cm



x6

height: 126.5 cm
width: 417 cm
depth: 83 cm